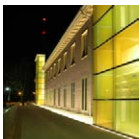


REFERENCES

PRIVATE PROJECTS



2006-2008
GEBÄUDE 005 , ENTWICKLUNGSGESELLSCHAFT PETRISBERG
Refurbishment and reorganisation of an old barracks building, Treves Germany
all architectural phases from inception to completion in collaboration with MMP-Architekten, 5.200 qm



2003-2008
DOMKAPITEL OSNABRÜCK
Refurbishment and reorganisation of the „Forum am Dom“, Osnabrück Germany
all architectural phases from inception to completion in collaboration with PBR Architekten, 3.300 qm



2006-2007
OFFICE BUILDING RUE STÜMPER
Construction of an office building in Luxembourg
all architectural phases from inception to completion, 4.420 square meters



2004 - 2006
BANQUE CENTRALE DU LUXEMBURG - BÂTIMENT MONTEREY
Transformation of an office building in L-Luxembourg
all architectural phases from inception to completion and project management, 6.500 square meters



2001-2006
SOTRAROUTE , GEMEINDEVERWALTUNG STRASSEN
Housing for elderly people with 16 flats as low energy construction & low income housing, Luxembourg
all architectural phases from inception to completion, 6.000 qm



2003-2005
CAISSE GÉNÉRALE DE PRÉVOYANCE
Conversion of an old storehouse into an office building for CBA, Luxembourg
all architectural phases from inception to completion, 1.230 square meters



2000-2005
A+P KIEFFER OMNITEC
Construction of an office building and storehouse with 'Low energy standard' in Luxembourg
all architectural phases from inception to completion, 4.950 square meters



2004
SHOWROOM
Showroom for Carpenter's workshop in L-Steinfort,
all architectural phases from inception to completion, 260 square meters



2003-2004
COMPANY-KINDERGARTEN GROUPE ST.PAUL
Modification of a kindergarten, Groupe St.Paul in L-Luxembourg
all architectural phases from inception to completion, 400 square meters



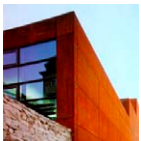
2003-2004
LUNCHROOM GROUPE ST.PAUL
Modification of a lunchroom, canteen kitchen and locker, in L-Luxembourg
all architectural phases from inception to completion, 660 square meters



2001-2004
KREDIETBANK LUXEMBOURG
Refurbishment of an office building in L-Luxembourg
all architectural phases from inception to completion, 2.650 square meters



2001-2003
RESTAURANT IN LUXEMBOURG
Refurbishment of a existing building with restaurant, offices and apartment
all architectural phases from inception to completion, 700 square meters



2000-2002
JEAN SCHMIT IMMOBILIERE
Conversion of a warehouse into an office building in L-Luxembourg
all architectural phases from inception to completion, 4.100 square meters



1999-2001
ROTAREX RAPID DEVELOPMENT
Construction of a warehouse and an office building in L-Echternach
all architectural phases from inception to completion, 2.100 square meters



1996-2001
IMMOSTRASSEN SÀRL
Construction of an office building with open space offices in L-Luxembourg
all architectural phases from inception to completion, 10.150 square meters



1997-2000
SES-ASTRA
Construction of an office building «Astra Business Centre» and a multipurpose centre in L-Betzdorf
all architectural phases from inception to completion, 6.000 square meters



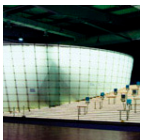
2000-2002
SES-ASTRA
Construction of an underground technical building «UTF – Underground Technical Facility»
all architectural work phases from sketch to completion, 1.700 square meters



1999-2001
SES-ASTRA
Transformation and extensions of the satellite operation centre «SOC 2000»
all architectural phases from sketch to completion, 870 square meters



1999-2001
SES-ASTRA
Refurbishment of the «Castle of Betzdorf» and transformation into a conference centre
all architectural phases from sketch to completion, 1.930 square meters



1999-2000
EXPO 2000 – GROUPEMENT D' INTERET ECONOMIQUE
Expopavillon Luxembourg, Expo 2000 Hannover
all architectural phases from inception to completion



1992-1997
BANKGESELLSCHAFT BERLIN
Construction of an office building for a bank, bd. Royal, L-Luxembourg
all architectural phases from sketch to completion, 6.450 square meters , ca. 21.000 m³



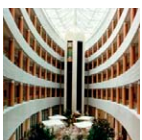
1991-1992
V. SCHAUMBOURG
Pharmacy in L-Bascharage
all architectural phases from inception to completion



1988-1989
C. MULLER
Jewelry Huberty in L-Luxembourg
all architectural phases from inception to completion, ca. 200 square meters



1987-1995
BANQUE ET CAISSE D'EPARGNE DE L'ETAT
Construction of the IT-Centre Rousegärtchen, all architectural phases from inception to completion
45.000 qm, In collaboration with Herr and Huyberechts architects



1987-1993
CONTINENTAL MOTOR INNS
New hotel Sofitel in L-Kirchberg
all architectural phases from inception to completion, 13.000 square meters



1987-1988

FRIEDEN

Interior and facade design of a store in L-Luxembourg
all architectural phases from inception to completion



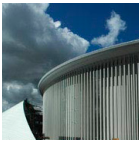
1980-1983

BANQUE INDOSUEZ

Construction of an office building, allée Scheffer, L-Luxembourg
all architectural phases from inception to completion

REFERENCES

PUBLIC PROJECTS



2000-2005

PHILHARMONIC CONCERT HALL LUXEMBOURG

Construction of the Philharmonic concert hall, Luxembourg, Architect Christian de Portzamparc, Paris
Consulting architect for tender and site management, 32.180 square meters



2002-2003

ADMINISTRATION COMMUNALE DE FRISANGE

Refurbishment and renovation of a former school in a community centre
all architectural phases from inception to completion, 1.050 square meters



1997-2002

FONDS DE RENOVATION DE LA VIEILLE VILLE Musée national d`Histoire et d` Art

Extension and transformation of the National Museum of History and Art
all architectural phases from inception to completion, 10.500 m³



1995-2000

CITY OF ESCH-SUR-ALZETTE

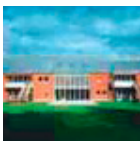
“Kulturfabrik”, transformation and refurbishment of an old slaughter house into an cultural centre
all architectural phases from inception to completion in collaboration with the architect J. Clemes



1994-1999

COMMUNE STRASSEN

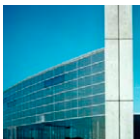
Housing for elderly people
all architectural phases from inception to completion, 24.150 m³



1994- 1998

COMMUNE SANDWEILER

Construction of a Kindergarten
all architectural phases from inception to completion, 2.800 square meters



1989-1999

ADMINISTRATION DES BATIMENTS PUBLICS (European School in Luxembourg)

Construction including the refurbishment of the existing buildings primary and secondary school with dining and event hall, all architectural phases from inception to completion, 45.000 square meters



1985-1994

COMMUNE DALHEIM

Construction of a primary school,
all architectural phases from inception to completion



1985-1993

ADMINISTRATION DES BÂTIMENTS PUBLICS

Extension of the University Centre – science departement in collaboration with R. Teisen, P.Weber
all architectural phases from inception to completion, 15.000 square meters

REFERENCES

HOUSING



2006 - 2007
ADMINISTRATION COMMUNALE DE STEINSEL LOTISSEMENT
28 terrace houses as low energie construction & low income housing in L-Heisdorf
all architectural phases from inception to completion, 3.800 square meters



2004 - 2006
HOUSE MOKO
Single family house in Luxembourg
all architectural phases from inception to completion, 524 square meters



1999 - 2002
HOUSE KINTGEN-LARBIERE
Single family house with second phase extension in L-Walferdange,
all architectural phases from inception to completion, 150 square meters



1992-2002
CITY OF LUXEMBOURG
18 houses in the housing development "Sauerwiss" in L-Luxembourg
all architectural phases from inception to completion, 2.500 square meters



1999 - 2000
HOUSE IN LUXEMBOURG
Single family house in Luxembourg,
all architectural phases from inception to completion, 307 square meters



1999 - 2000
HOUSE MEISCH-THYES
Transformation of a single family house
all architectural phases from inception to completion



1998 - 2000
WAGENER-PAULUS
Construction of a building with garages and wintergarden in L-Pontpierre
all architectural phases from inception to completion



1997-1997
HAUS EWEN
Single family house in L-Kehlen
all architectural phases from inception to completion



1989 - 1995
FONDS DE LOGEMENT
Low income housing in L-Kirchberg in 3 phases
all architectural phases from inception to completion

REFERENCES

URBANISM



2007
NORDSTADT-CENTRAL AXIS
preparative master plan 300ha, In collaboration with Meurer Architekten + Stadtplaner Runge + Kuchler Ingenieure, Sommerlad.Haase.Kuhli



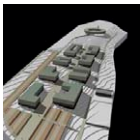
2004 - 2007
BRIDEL
master plan, Bridel 3,3ha



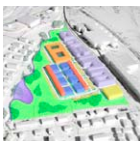
2003 - 2007
DIEKIRCH
master plan



1986 - 2005
FONDS D'AMÉNAGEMENT ET D'URBANISATION DU KIRCHBERG
Consulting architect and urbanist



2000
AUDIOVISUAL ZONE BETZDORF
master plan, 15ha



2001 - 2003
SOMMET
Development plan Sommet, 8ha and open space planning Dipach 5ha
L-Esch-sur-Alzette



FONDS D'AMENAGEMENT ET D'URBANISATION DU KIRCHBERG
Eurpoean quarter, Kirchberg